



Using your European eID


eID gives you access to a world of digital opportunities. Our societal needs for online services of the public and private sector are expanding rapidly. Instead of countless login combinations for each service you access online, using eID allows us to access online services with a single login. eID is short for 'electronic identification' and refers to a solution for citizens and businesses allowing them to prove their identity online. eID is widely-used in the European digital world and allows you to take advantage of digitisation.



 Christine Gardner


“Secure online access to different services in your own country of residence or abroad is a huge improvement on the time-consuming and inconvenient alternatives”



 Lina Tarasonyte

“Let’s get away from paper and use secure modern methods of accessing and distributing information”



 Leon van Meel

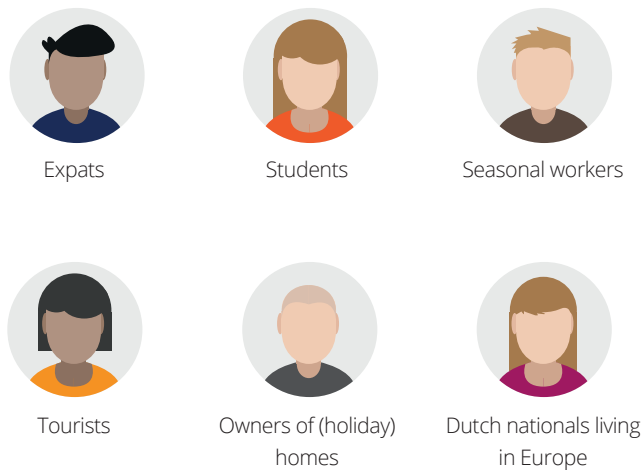
“Being able to access a wide range of public services at home in the Netherlands but also in a large number of European countries with a single secure login would really help me doing business and supporting customers abroad”

Hundreds of millions of European citizens and businesses in direct contact with the potential of the European single digital market

Benefits of eID for European citizens

- Save time and money by reduced and simplified administrative procedures
- Expanded number of online services accessible
- Increased service level offered by public administrations
- Higher level of online safety with your nationally issued eID
- Reduced set of online login keys to a single, secure, cross-border identification method

European citizens



European representatives of Dutch businesses



Example services *

- Requesting (birth) certificates
- Registering for (parking) permits
- Objecting against (waste) fees and taxes

Example services **

- Requesting (taxation) reports
- Registering for (event) permits
- Objecting against (waste) fees and taxes

* For some services a registration in the RNI ('Register Niet-Ingezetenen') may be required.

** For some services an authorisation check of the Chamber of Commerce number may be required.

Connectis

Proud to be one of the biggest suppliers of identity management in the Netherlands, we handle millions of login transactions annually. Over 12 million Dutch residents use our infrastructure to login at their service providers. From health care insurance to financial institutions. From the local municipalities to national government administrations.

www.connectis.nl

